

Customer :

Date of Issue : 13-Sep-10



# SPECIFICATION

## *(for Approval)*

Commodity	HIGH VOLTAGE POWER CAPACITOR
Rating	22/16.2kV 1Φ 50Hz 150kvar
Spec No.	PS - 4943
DWG No.	KS - 4943

Approved	

 **SAMWHA CAPACITOR CO.,LTD.**

Prepared	Checked	Approved
 2010.09.13		

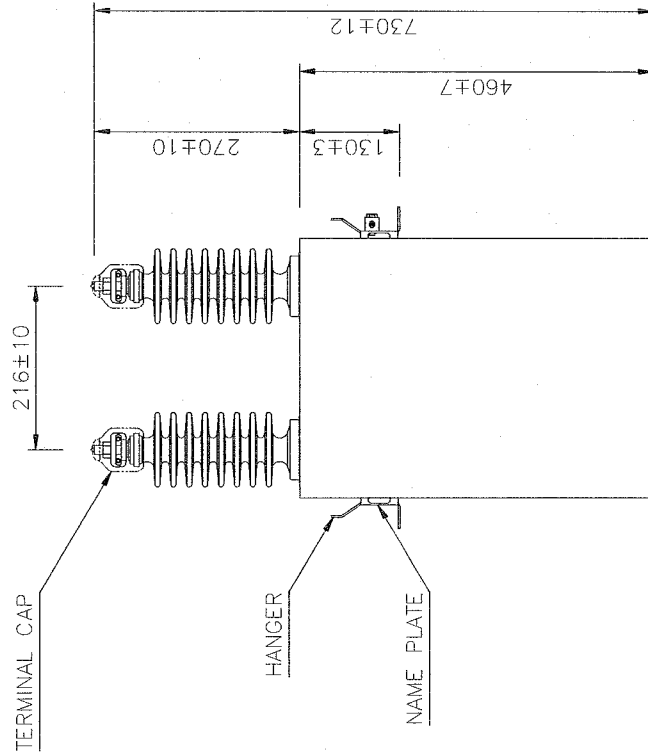
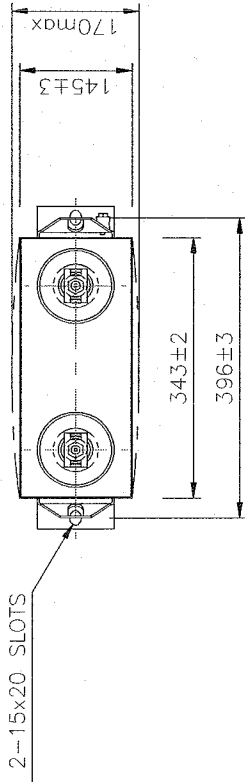
Address : 124, Buk - ri, Namsa - myeun, Cheoin - Gu, Yongin - City,  
Kyungki - Do, Korea (Zip code : 449 - 884)

Telephone : 031 - 330 - 5838 ~ 5841

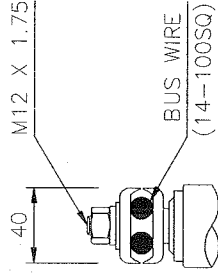
Facsimile : 031 - 339 - 0413

1. SCOPE : HIGH VOLTAGE POWER CAPACITOR
2. USE : FOR POWER FACTOR CORRECTION AND VOLTAGE REGULATION
3. USUAL SERVICE CONDITION
- 1) ALTITUDE : MAX. 1000 METERS ABOVE SEA LEVEL
- 2) AMBIENT TEMPERATURE : -25°C ~ +45°C  
(AVERAGE AMBIENT TEMPERATURE FOR A PERIOD OF 24HOURS : BELOW +35°C, 1YEAR : BELOW +25°C)
4. LOCATION : INDOOR/OUTDOOR
5. TYPE : TAF - T225150S16R
6. RATING OF CAPACITOR UNIT
- 1) LINE VOLTAGE : 22 [kV]
- 2) RATED VOLTAGE : 16.2 [kV]
- 3) RATED CAPACITY : 150 [kvar]
- 4) RATED CAPACITANCE : 1.8 [uF]
- 5) RATED CURRENT : 9.3 [A]
- 6) FREQUENCY : 50 [Hz]
- 7) PHASE : 1 [Φ]
7. PERFORMANCES
- 1) CAPACITANCE TOLERANCE : FROM -5% ~ +10% OF THE RATED VALUE (AT 20°C)
- 2) WITHSTANDING VOLTAGE TEST
- ① BETWEEN TERMINALS : 32.4 [kVAC], 10 SEC OR 64.8 [kVDC], 10 SEC
- ② BETWEEN TERMINALS AND CASE : 50 [kVAC], 10 SEC
- ③ IMPULSE (1.2 x 50μs) : 125 kV BIL
- 3) MAXIMUM PERMISSIBLE VOLTAGE : 110% OF THE RATED VOLTAGE
- 4) MAXIMUM PERMISSIBLE CURRENT : 130% OF THE RATED CURRENT
- 5) CAPACITOR LOSS : BELOW 0.02% (IN STABILITY STATE)
- 6) TEMPERATURE RISE : BELOW 30DEG (AT 35°C, RATED VOLTAGE)
- 7) SEALING TEST : NO OIL LEAKS WHEN HEATING A CAPACITOR IN A THERMOSTATIC BATCH OF 65°C UNTIL A CONSTANT TEMPERATURE IS REACHED
- 8) BUILTIN DISCHARGE RESISTOR : VOLTAGE DECREASES TO BELOW 75V IN 10 MINUTES WHEN DISCONNECTED FROM POWER SOURCE
8. THE OTHERS
- 1) PAINTING COLOR : MUNSELL 5Y7/1
- 2) IMPREGNATION : CAPACITOR OIL (NON P.C.B)
- 3) WEIGHT : < 37 [kg]
- 4) BUSHING : 2 BUSHING (150kV. BIL)
- 5) CREEPAGE DISTANCE : 457.2 [mm]
9. REFERENCE STANDARD : IEC 60871-1

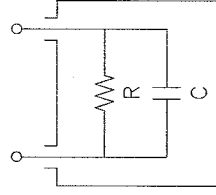




TERMINAL DETAIL



INNER CONNECTION



C : CAPACITOR  
R : RESISTOR

- \* Weight : <37kg
- \* Insulation level : 50kV/125kV. BIL
- \* Bushing Insulation Level : 150kV. BIL
- \* Ambient Temperature : -25 °C ~ +45 °C

NAME OF PART	HIGH VOLTAGE POWER CAPACITOR	SCALE	N/S	DIM	mm
DESIGN	(22/16.2kV 1Φ 50Hz 150kvar)	DATE	SET, 13.	2010	
CHECKED		PROJECT NO			
APPROVED	<i>[Signature]</i>	SPEC No.	PS - 4943		
		ITEM NO			
		DRAW No.	KS - 4943		

REVISION	SYMBOL	ITEMS	REASON	DATE	CHECK