

Customer :

Date of Issue : 13-Sep-10



# SPECIFICATION

## *(for Approval)*

Commodity	HIGH VOLTAGE POWER CAPACITOR
Rating	22/16.2kV 1Φ 50Hz 200kvar
Spec No.	PS - 4944
DWG No.	KS - 4944

Approved	

 **SAMWHA CAPACITOR CO.,LTD.**

Prepared	Checked	Approved
 2010.09.13		

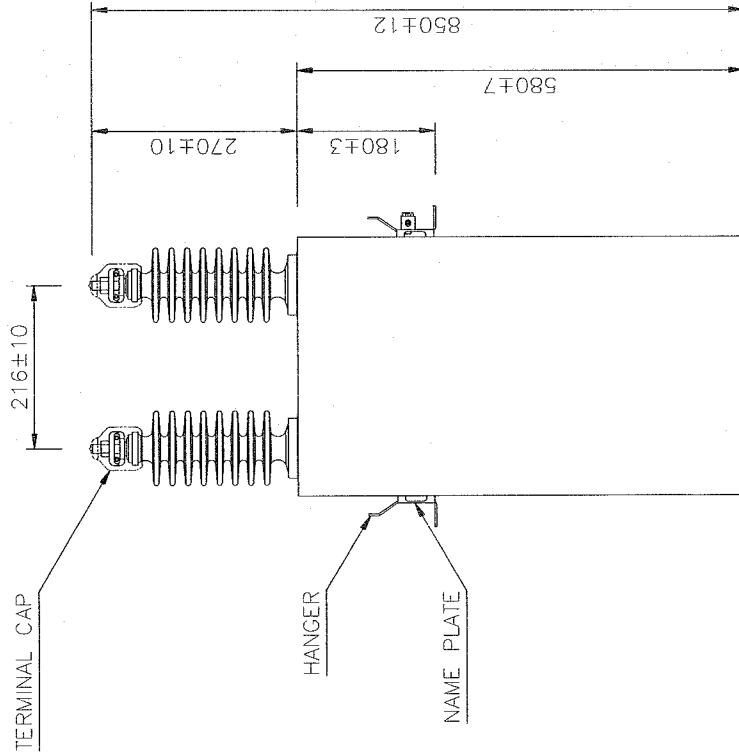
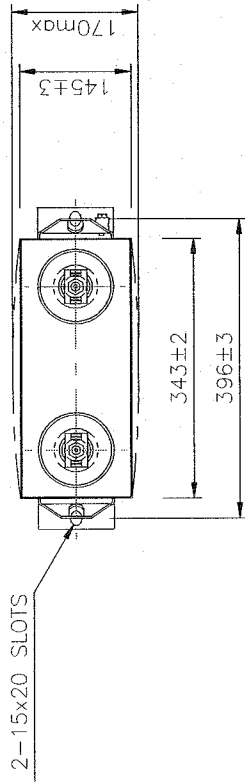
Address : 124, Buk - ri, Namsa - myeun, Cheoin - Gu, Yongin - City,  
Kyungki - Do, Korea (Zip code : 449 - 884)

Telephone : 031 - 330 - 5838 ~ 5841

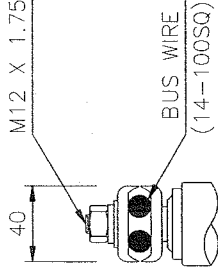
Facsimile : 031 - 339 - 0413

SPECIFICATION	UNIT CAPACITOR	1 / 1
1. SCOPE	: HIGH VOLTAGE POWER CAPACITOR	
2. USE	: FOR POWER FACTOR CORRECTION AND VOLTAGE REGULATION	
3. USUAL SERVICE CONDITION		
1) ALTITUDE	: MAX. 1000 METERS ABOVE SEA LEVEL	
2) AMBIENT TEMPERATURE	: -25°C ~ +45°C (AVERAGE AMBIENT TEMPERATURE FOR A PERIOD OF 24HOURS : BELOW +35°C, 1YEAR : BELOW +25°C)	
4. LOCATION	: INDOOR/OUTDOOR	
5. TYPE	: TAF - T225200S16R	
6. RATING OF CAPACITOR UNIT		
1) LINE VOLTAGE	: 22 [kV]	
2) RATED VOLTAGE	: 16.2 [kV]	
3) RATED CAPACITY	: 200 [kvar]	
4) RATED CAPACITANCE	: 2.4 [uF]	
5) RATED CURRENT	: 12.3 [A]	
6) FREQUENCY	: 50 [Hz]	
7) PHASE	: 1 [Φ]	
7. PERFORMANCES		
1) CAPACITANCE TOLERANCE	: FROM -5% ~ +10% OF THE RATED VALUE (AT 20°C)	
2) WITHSTANDING VOLTAGE TEST		
① BETWEEN TERMINALS	: 32.4 [kVAC], 10 SEC OR 64.8 [kVDC], 10 SEC	
② BETWEEN TERMINALS AND CASE	: 50 [kVAC], 10 SEC	
③ IMPULSE (1.2 x 50μs)	: 125 kV BIL	
3) MAXIMUM PERMISSIBLE VOLTAGE	: 110% OF THE RATED VOLTAGE	
4) MAXIMUM PERMISSIBLE CURRENT	: 130% OF THE RATED CURRENT	
5) CAPACITOR LOSS	: BELOW 0.02% (IN STABILITY STATE)	
6) TEMPERATURE RISE	: BELOW 30DEG (AT 35°C, RATED VOLTAGE)	
7) SEALING TEST	: NO OIL LEAKS WHEN HEATING A CAPACITOR IN A THERMOSTATIC BATCH OF 65°C UNTIL A CONSTANT TEMPERATURE IS REACHED	
8) BUILTIN DISCHARGE RESISTOR	: VOLTAGE DECREASES TO BELOW 75V IN 10 MINUTES WHEN DISCONNECTED FROM POWER SOURCE	
8. THE OTHERS		
1) PAINTING COLOR	: MUNSELL 5Y7/1	
2) IMPREGNATION	: CAPACITOR OIL (NON P.C.B)	
3) WEIGHT	: < 45 [kg]	
4) BUSHING	: 2 BUSHING (150kV. BIL)	
5) CREEPAGE DISTANCE	: 457.2 [mm]	
9. REFERENCE STANDARD	: IEC 60871-1.	

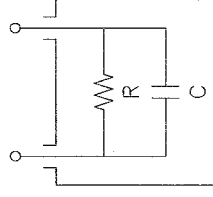




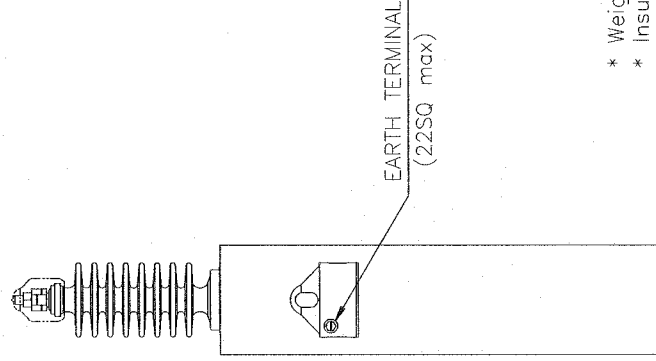
TERMINAL DETAIL



INNER CONNECTION



C : CAPACITOR  
R : RESISTOR



- \* Weight : <45kg
- \* Insulation level : 50kV/125kV. BIL
- \* Bushing Insulation Level : 150kV. BIL
- \* Ambient Temperature : -25 °C ~ +45 °C

NAME OF PART	HIGH VOLTAGE POWER CAPACITOR (22/16.2kV 1Φ 50Hz 200kvar)	SCALE	N/S	DIM	mm
DESIGN	<i>[Signature]</i>	DATE	SET, 13.	2010	
CHECKED		APPROVED	<i>[Signature]</i>		
		PROJECT NO	PS	-- 4944	
		ITEM NO	KS -- 4944		
		DRAW No.	KS -- 4944		

REVISION	SYMBOL	ITEMS	REASON	DATE	CHECK