

Customer :

Date of Issue : 11-Aug-10

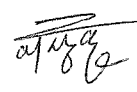


SPECIFICATION

(for Approval)

Commodity	HIGH VOLTAGE POWER CAPACITOR
Rating	4.16kV 3Φ 50Hz 500kvar
Spec No.	PH - 4750
DWG No.	KH - 4750

Approved	

 **SAMWHA CAPACITOR CO.,LTD.**

Prepared	Checked	Approved
 2010.08.11	 8/11	

Address : 124, Buk - ri, Namsa - myeun, Cheoin - Gu, Yongin - City,
Kyungki - Do, Korea (Zip code : 449 - 884)

Telephone : 031 - 330 - 5838 ~ 5841

Facsimile : 031 - 339 - 0413

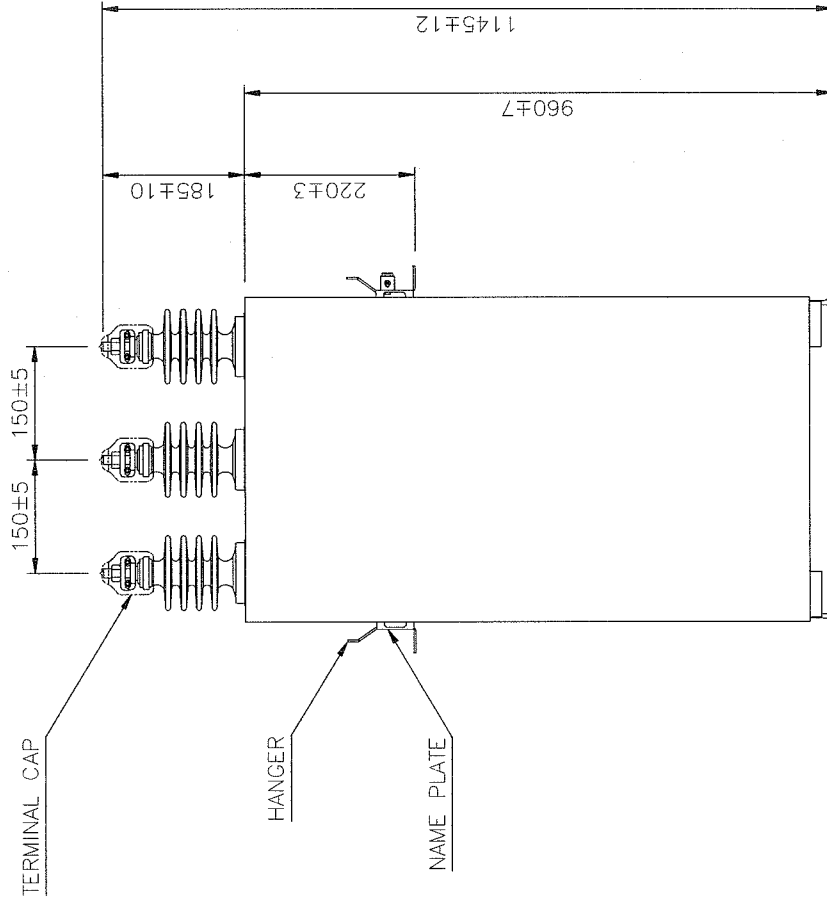
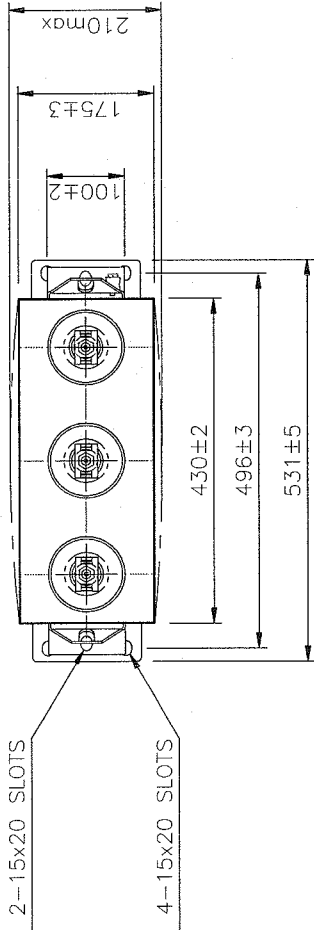
SPECIFICATION

UNIT CAPACITOR

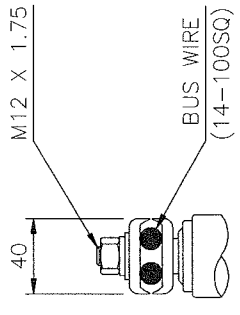
1 / 1

1. SCOPE : HIGH VOLTAGE POWER CAPACITOR
2. USE : FOR POWER FACTOR CORRECTION AND VOLTAGE REGULATION
3. USUAL SERVICE CONDITION
- 1) ALTITUDE : MAX. 1000 METERS ABOVE SEA LEVEL
- 2) AMBIENT TEMPERATURE : -25°C ~ +45°C
(AVERAGE AMBIENT TEMPERATURE FOR A PERIOD OF 24HOURS : BELOW +35°C, 1YEAR : BELOW +25°C)
4. LOCATION : INDOOR/OUTDOOR
5. TYPE : TAF - T45500R
6. RATING OF CAPACITOR UNIT
- 1) LINE VOLTAGE : 4.16 [kV]
- 2) RATED VOLTAGE : 4.16 [kV]
- 3) RATED CAPACITY : 500 [kvar]
- 4) RATED CAPACITANCE : 92.0 [uF]
- 5) RATED CURRENT : 69.4 [A]
- 6) FREQUENCY : 50 [Hz]
- 7) PHASE : 3 [Φ]
7. PERFORMANCES
- 1) CAPACITANCE TOLERANCE : FROM -5% ~ +10% OF THE RATED VALUE (AT 20°C)
- 2) WITHSTANDING VOLTAGE TEST
- ① BETWEEN TERMINALS : 8.3 [kVAC], 10 SEC OR 16.6 [kVDC], 10 SEC
- ② BETWEEN TERMINALS AND CASE : 20 [kVAC], 10 SEC
- ③ IMPULSE (1.2 x 50 μ s) : 60 kV BIL
- 3) MAXIMUM PERMISSIBLE VOLTAGE : 110% OF THE RATED VOLTAGE
- 4) MAXIMUM PERMISSIBLE CURRENT : 130% OF THE RATED CURRENT
- 5) CAPACITOR LOSS : BELOW 0.02% (IN STABILITY STATE)
- 6) TEMPERATURE RISE : BELOW 30DEG (AT 35°C, RATED VOLTAGE)
- 7) SEALING TEST : NO OIL LEAKS WHEN HEATING A CAPACITOR IN A THERMOSTATIC BATCH OF 65°C UNTIL A CONSTANT TEMPERATURE IS REACHED
- 8) BUILTIN DISCHARGE RESISTOR : VOLTAGE DECREASES TO BELOW 75V IN 10 MINUTES WHEN DISCONNECTED FROM POWER SOURCE
8. THE OTHERS
- 1) PAINTING COLOR : MUNSELL 5Y7/1
- 2) IMPREGNATION : CAPACITOR OIL (NON P.C.B)
- 3) WEIGHT : < 95 [kg]
- 4) BUSHING : 3 BUSHING (75kV. BIL)
- 5) CREEPAGE DISTANCE : 190.5 [mm]
9. REFERENCE STANDARD : IEC 60871-1

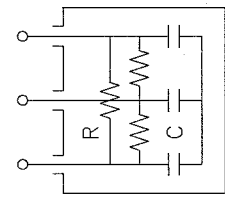




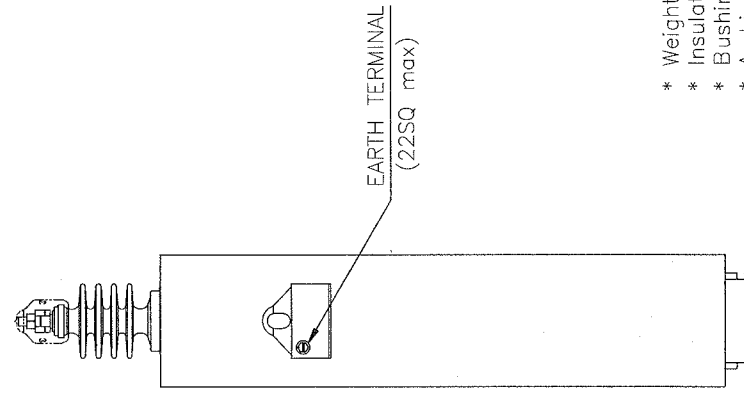
TERMINAL DETAIL



INNER CONNECTION



C : CAPACITOR
R : RESISTOR



- * Weight : <95kg
- * Insulation level : 20kV/60kV. BIL
- * Bushing Insulation Level : 75kV. BIL
- * Ambient Temperature : -25 °C ~ +45 °C

NAME OF PART	HIGH VOLTAGE POWER CAPACITOR		SCALE	N/S	DIM	mm
DESIGN	(4.16kV 3Φ 50Hz 500kvar)		DATE	AUG, 11, 2010		
CHECKED	APPROVED	PROJECT NO	SPEC No.	PH - 4750		
ITEM NO		DRAW NO.				
24008-1		KH - 4750				

REVISION	SYMBOL	ITEMS	REASON	DATE	CHECK