

# SPECIFICATION

## *(for Approval)*

<b>Commodity</b>	<b>SURGE ABSORBING CAPACITOR</b>
<b>Rating</b>	6600VAC 3P 50Hz 0.1 x 3 uF
<b>Spec No.</b>	PJ - 025-7
<b>DWG No.</b>	KJ - 025-7

<b>Approved</b>	



**SAMWHA CAPACITOR CO., LTD.**

Prepared	Checked	Approved
 2/16	 2.18	 2/18

Address : 124, Buk - ri, Namsa - myeun, Yongin - City  
 Kyungki - Do, Korea (Zip code : 449 - 880)

Telephone : 031 - 330 - 5838 ~ 5841

Facsimile : 031 - 339 - 0413

**SPECIFICATION**

**UNIT CAPACITOR**

1 / 1

- 1. SCOPE : SURGE ABSORBING CAPACITOR
- 2. USUAL SERVICE CONDITION
  - 1) ALTITUDE : MAX. 1000 METERS ABOVE SEA LEVEL
  - 2) AMBIENT TEMPERATURE : -20°C ~ +40°C  
(AVERAGE AMBIENT TEMPERATURE FOR A PERIOD OF 24HOURS : BELOW +70°C, 1YEAR : BELOW +60°C)

3. LOCATION : INDOOR/OUTDOOR

4. TYPE : THF - T6003TCR

5. RATING OF CAPACITOR UNIT

1) RATED VOLTAGE	:	6600	[VAC]
2) RATED CAPACITY	:	0.1 x 3	[μF]
4) FREQUENCY	:	50	[Hz]
5) PHASE	:	3	[φ]
6) RATED CURRENT	:	0.12	[A]

6. PERFORMANCES

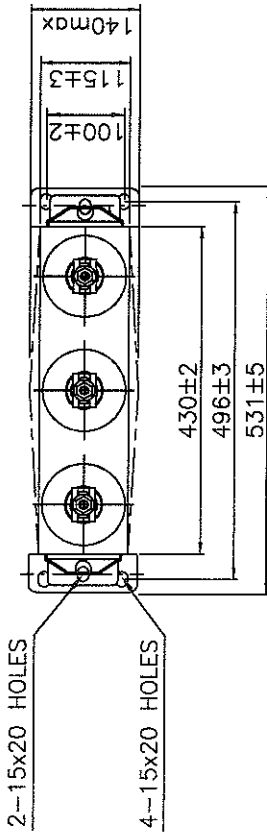
- 1) CAPACITANCE TOLERANCE : FROM -10% ~ +10% OF THE RATED VALUE (AT 20°C)
- 2) WITHSTANDING VOLTAGE TEST
  - BETWEEN TERMINALS AND CASE : 22kVAC, 1min
- 3) MAXIMUM PERMISSIBLE VOLTAGE : 110 % OF THE RATED VOLTAGE
- 4) CAPACITOR LOSS : BELOW 0.6% (AT 20°C, RATED VOLTAGE)
- 5) SEALING TEST : NO OIL LEAKS WHEN HEATING A CAPACITOR IN A THERMOSTATIC BATCH OF 80°C UNTIL A CONSTANT TEMPERATURE IS REACHED

7. THE OTHERS

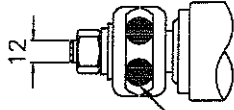
- 1) PAINTING COLOR : MUNSELL 5Y7/1
- 2) IMPREGNATION : CAPACITOR OIL (NON P.C.B)
- 2) BUSING : ONE BUSHING (M12)

8. REFERENCE STANDARD : JEM 1362

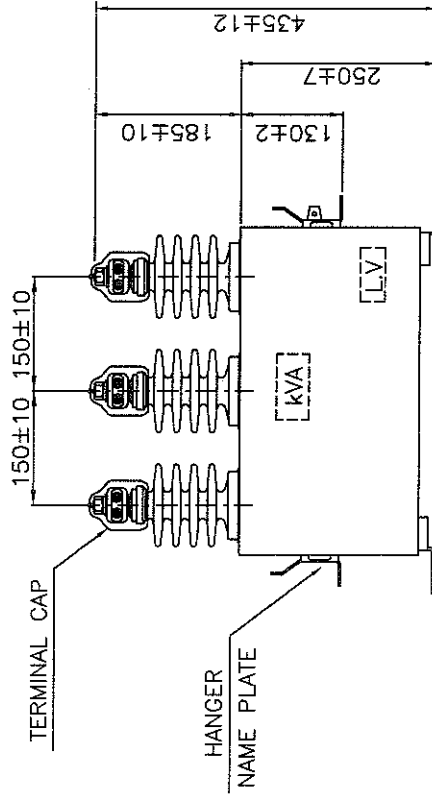




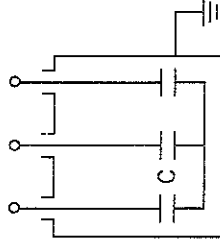
TERMINAL DETAIL



BUS WIRE  
(14-100SQ)



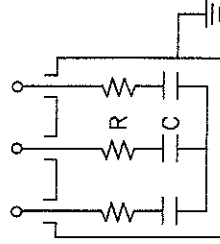
INNER CONNECTION



C TYPE

C : CAPACITOR

R : RESISTOR



C-R TYPE

REVISION	SYMBOL	ITEMS	REASON	DATE	CHECK
△x					
△x					
△x					
△x					
△x					

NAME OF PART	SURGE SBSORBING CAPACITOR (3φ 50/60Hz 0.1uF x 3)		SCALE	N/S	DIM	mm
DESIGN	CHECKED	APPROVED	DATE	AUG. 26. 2003		
PROJECT NO	ITEM NO		SPEC No.	PJ-025-7		
			DRAW No.	KJ-025-7		

6600/√3 V C TYPE :  
6600/√3 V C-R TYPE :